

VehicleGPSdevice.com

Mini OBD GPS TRACKER USER MANUAL



PREFACE

Thank you for purchasing OBD GPS tracker. This manual shows how to operate the device smoothly in details, please make sure to read this manual carefully before using the device. Please be noted that any update of the manual is made without prior notice. Each time the update of the manual will be released in the latest product sales. The manufacturer won't assume any legal responsibility for any errors or omissions made in this manual.

1 SUMMARY

Working based on existing GSM/GPRS network and GPS satellites, this product can locate and monitor any remote targets by SMS, APP and Internet. It adopts the most advanced technology of GPS and AGPS dual positioning.

Specifications

Content	Specs.
Dim.	50*45*20mm
Weight	40g
Network	GSM/GPRS
Band	850/900/1800/1900Mhz
GPS sensitivity	-159dBm
GPS accuracy	10m
Work voltage	12V-36v
Time To First Fix	Cold status 45s-150s Warm status 35s Hot status 1s
Storage Temp.	-40°C to +85°C
Operation Temp.	-20°C to +55°C
Humidity	5%--95% non-condensing

2.Operational

Notices:

1).GPS tracking can be worked outdoor. Must have mobile phone gsm signal and have GPS signal, It can block GPS satellite signal when there are metal or building above the GPS tracker

2).Sim Card Is Included with purchase from VehicleGPSdevice.com



2.1.Quick using

1) insert the SIM card to in gps tracker

2) tracker Insert in the Car OBD interface, drive car to the outdoor

3)Text send: **APN123456 Mobilenet** to sim card in tracker ,tracker
replypositioninginformation [APN123456+space+Mobilenet](#)

EXPLANATION OF PARAMETERS/CODES IN SMS MESSAGE

2.2 Insert in the Car OBD interface

connect the device to the car obd interface ,as shown below



INDICATOR LIGHT STATUS	MEANING
green light -Solid	GSM signal connection
green light -Flash	NO GSM or searching gsm signal
blue light -Solid	GPS signal connection
blue light –quickly Flash	Searching gps signal

Note: All led will turn off after 10 minutes for best hide.if you call the device mobile number,so the led will turn on work again.

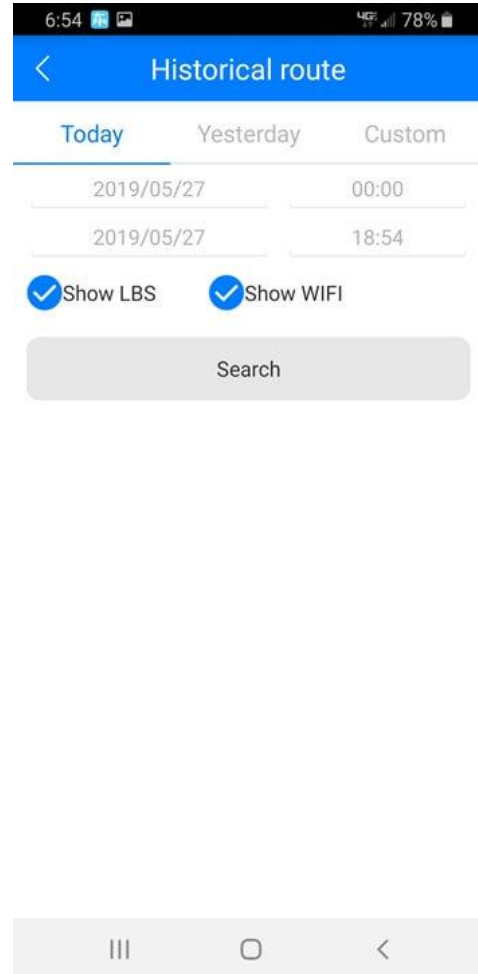
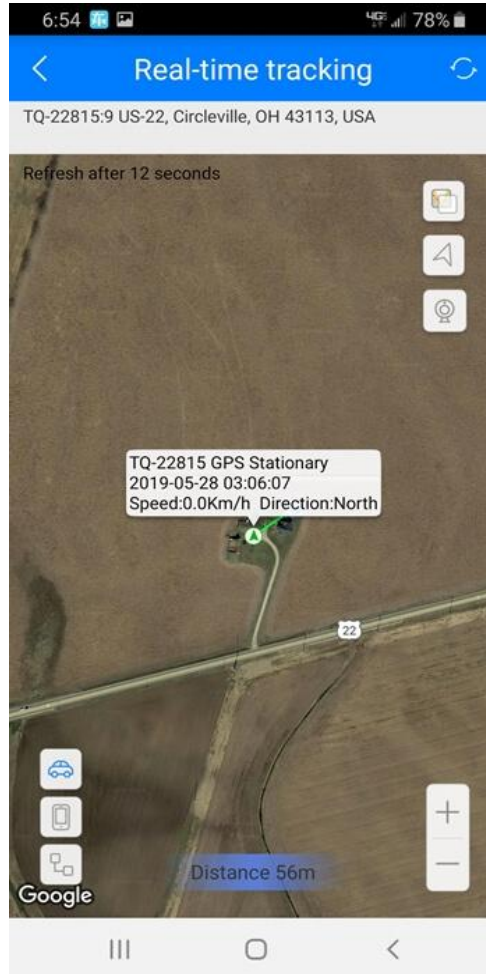
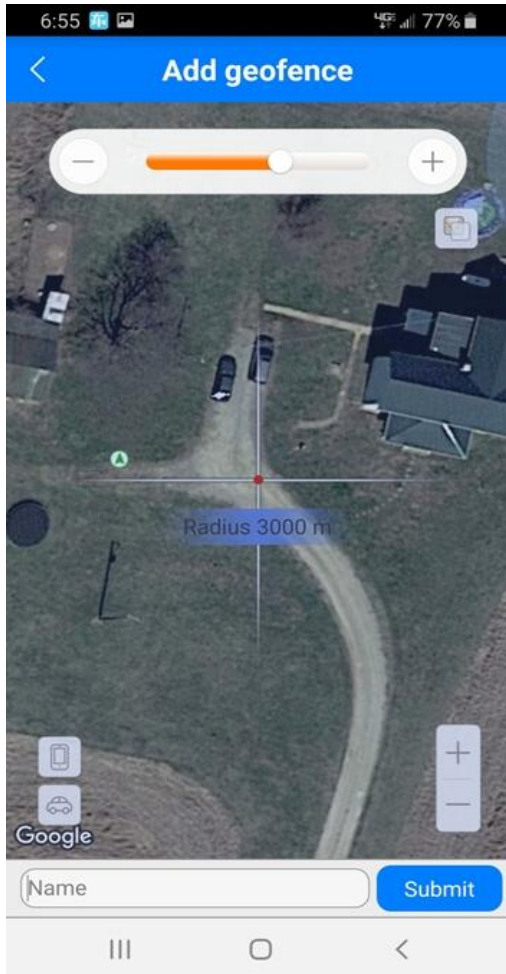
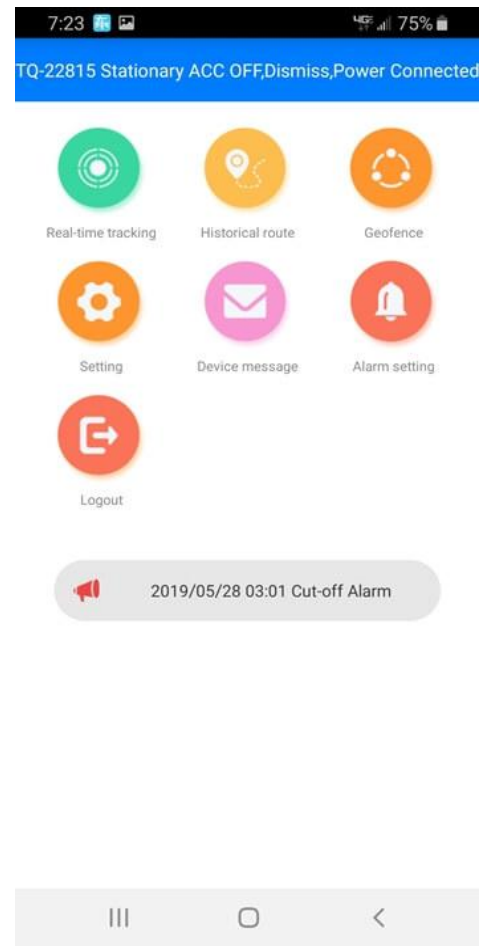
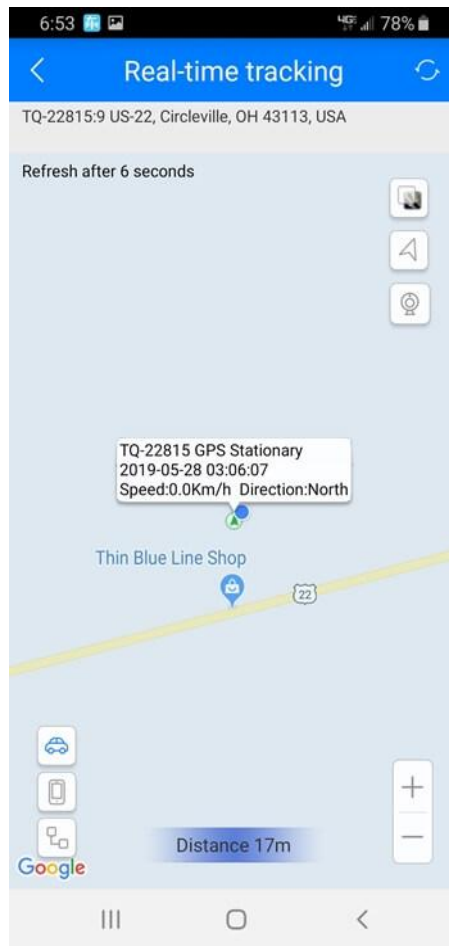
Connect 12V-36 v voltage of the power supply

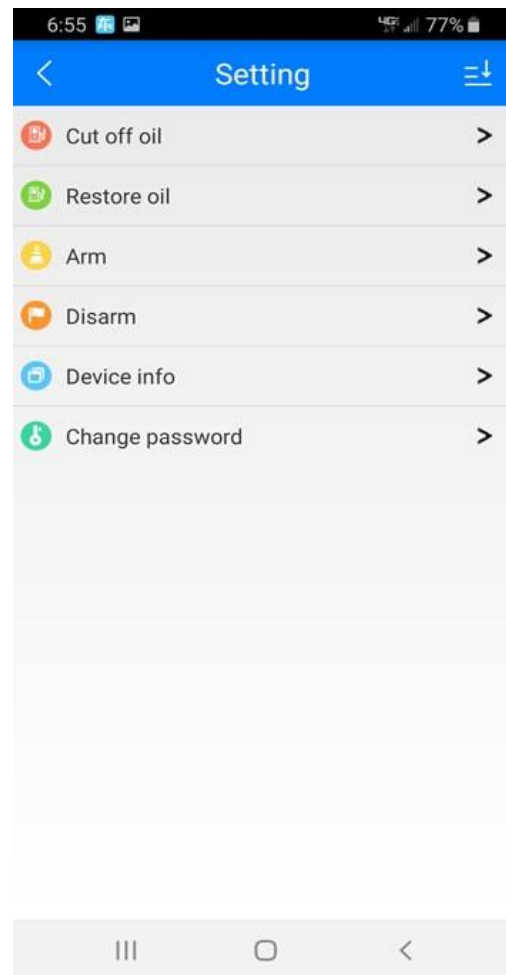
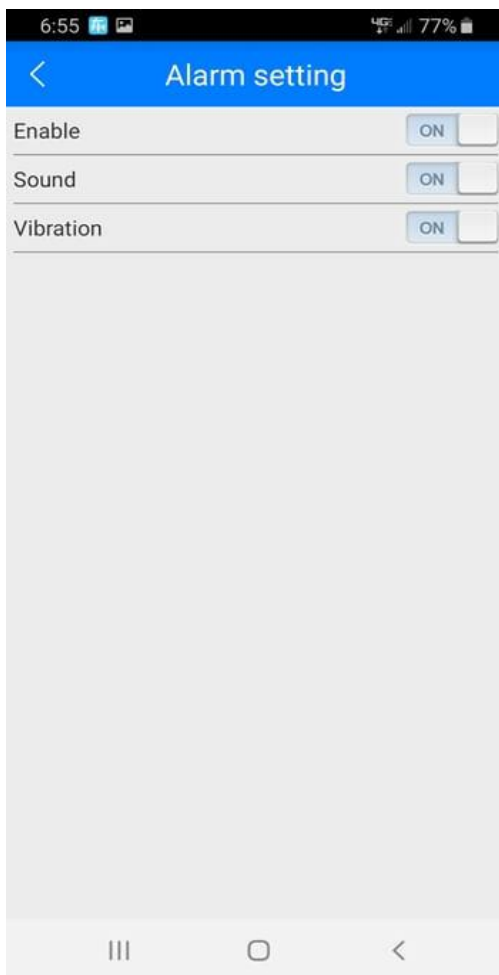
3:Support Website tracking and APP tracking

3.1 Scan APP and Download APP

1)scan QR code---open with browser--- choose Android or IPHONE---download-- installation app

<https://vehiclegpsdevice.com/tracking-software/>

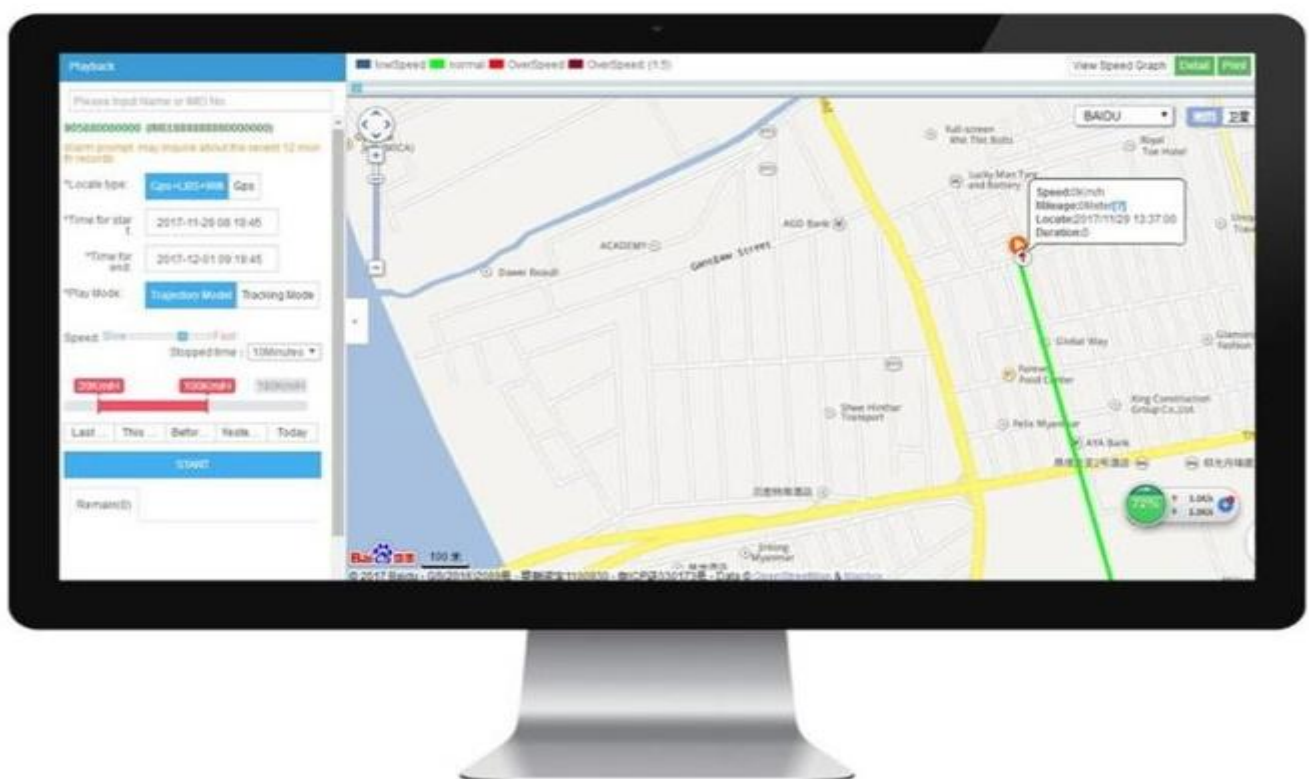




Log in using the tracker IMEI # and the default password is 123456

Download Phone APPS & Online Platform Login

<https://vehiclegpsdevice.com/tracking-software/>



5. FAQ and processing methods.

FAQ	Instructions/Solutions
Fail to turn it on	Insert card turn on, and connected 12- 36 v power supply from OBD interface
No GSM signal	<p>Please check if SIM card installed correctly and have money, if there a mobile phone GSM signal</p> <ul style="list-style-type: none"> ● Please check if SIM card is 2G or Compatible 2G GSM network. And have to mobile phone signal
No GPS	A more open view of the sky is recommended to make sure the device can receive the GPS signal normally. in outdoor and take device to walk around
No reply to SMS command	Password wrong or the format is wrong. restore factory settings send messages “ begin123456 ”
No reply to calling & No	Authorized / admin phone number is incorrect or has not set up
SMS position OK, cannot the APP and web	Pls check if APN is correctly set. And set the correct APN
Platform position is difference and the actual position.	position time don't update or no GPS signal: call the device phone number and receive the position message. If it shows like Pic 2, pls make sure the device can receive the GPS signal normally. in outdoor, and take device to walk around, make sure sim normal